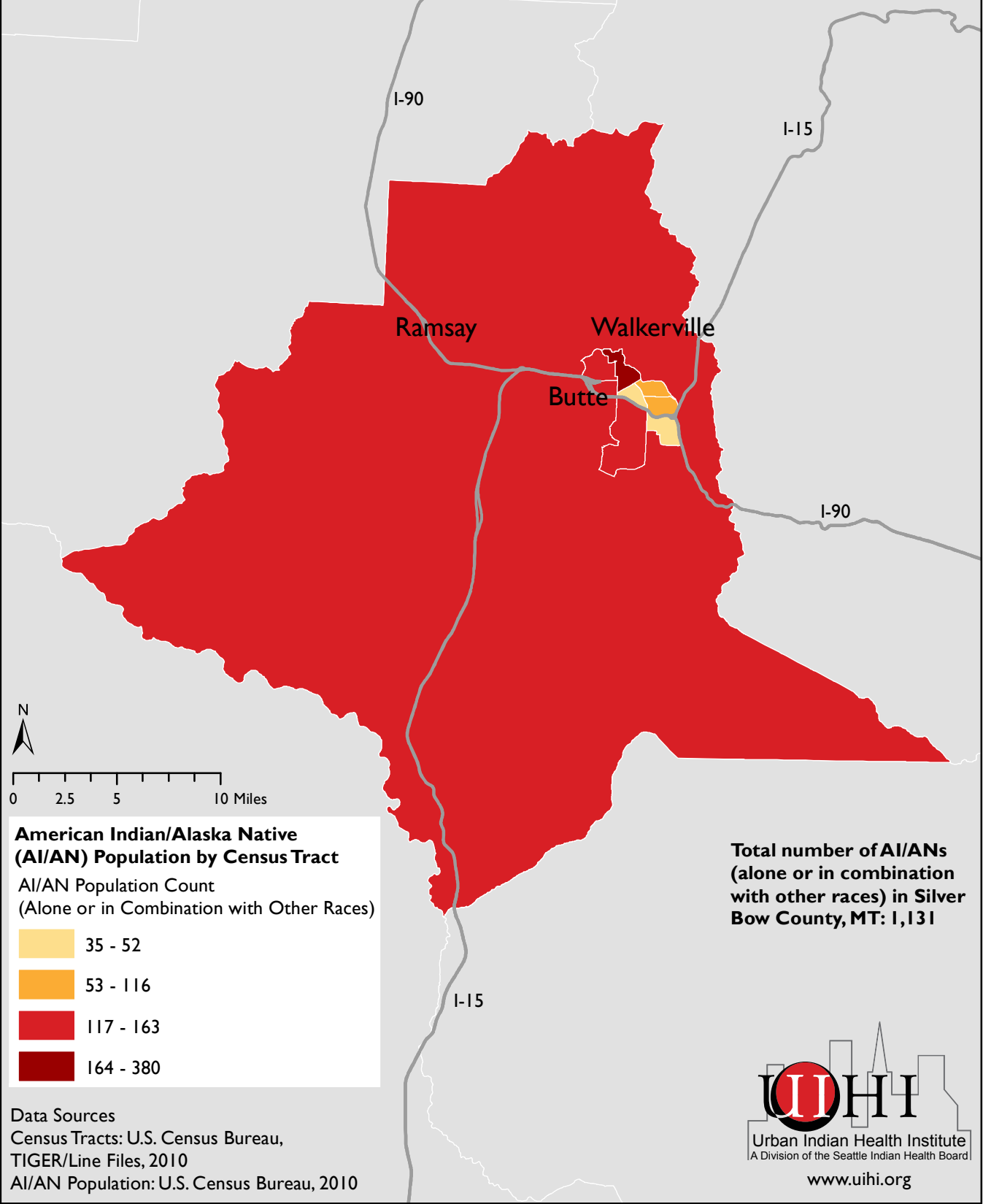


# American Indian/Alaska Native Population by Census Tract, North American Indian Alliance Service Area, 2010 Census



**American Indian/Alaska Native (AI/AN) Population by Census Tract**  
AI/AN Population Count  
(Alone or in Combination with Other Races)

35 - 52
53 - 116
117 - 163
164 - 380

**Total number of AI/ANs  
(alone or in combination  
with other races) in Silver  
Bow County, MT: 1,131**

Data Sources  
Census Tracts: U.S. Census Bureau,  
TIGER/Line Files, 2010  
AI/AN Population: U.S. Census Bureau, 2010

U.I.H.I.  
Urban Indian Health Institute  
A Division of the Seattle Indian Health Board  
www.uihi.org